



DATASHEET

Enterprise Fax Manager

Maintain Control and Easily Manage and Monitor all RightFax Servers on a Single Network

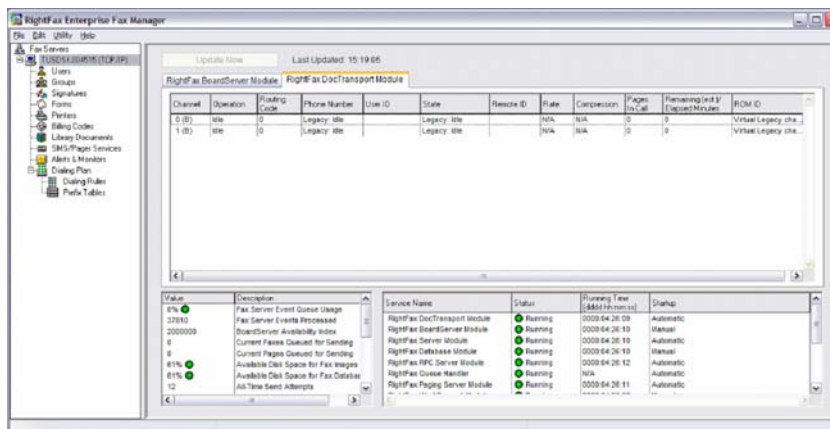
OVERVIEW

The RightFax Enterprise Fax Manager (EFM) is an easy-to-use management tool that allows administrators to manage and monitor all RightFax Servers on a network at one time from one centralized location. The intuitive interface of EFM is designed for multiple server use and provides administrators with the ability to check vital server information and statistics to monitor the health and efficiency of the fax servers on their network. With Enterprise Fax Manager, you can manage users, groups, signatures, forms, printers, billing codes, library documents, and more, for all RightFax Servers on your enterprise, right from one EFM application.

HOW IT WORKS

The left side of the screen, called the Fax Server Tree, displays all the open RightFax Servers and their administrative components (users, forms, printers, etc.). The right side displays details of the selected component (such as individual users or library documents), which can be added, deleted and modified according to individual needs. EFM also allows you to monitor the status of all RightFax Servers and services. The right side of the screen can also display the various services that are running, their status, and allows you to start or stop services, or create new services as needed. EFM can be operated from any Microsoft Windows 2000 or Windows 2003-based RightFax client machine, allowing for centralized administration and management of all RightFax Servers on the network. For remote access, EFM comes with a Web Edition that can be accessed from any standard Web browser, within your network.

Figure 1. Enterprise Fax Manager enables administrators to manage and monitor RightFax services, users and groups



MULTISERVER SUMMARIES AT A GLANCE

EFM lets administrators easily check the status of all fax servers, displaying a range of items including:

- Overall status of the server (green "+" indicates that all services are running normally, yellow "!" indicates that one or more services are not running but that normal fax operations are available, red "-" indicates that one or more services are not running and normal fax operations are not available)
- Server version and serial number
- The time elapsed since the RightFax Server was last started
- The percentage of the fax server's internal Event Queue currently in use
- Server's total fax board and channel availability
- Character set being used by the server Original Equipment Manufacturer (OEM) or American National Standards Institute (ANSI)

MONITORING INDIVIDUAL SERVER STATISTICS AND SERVICES

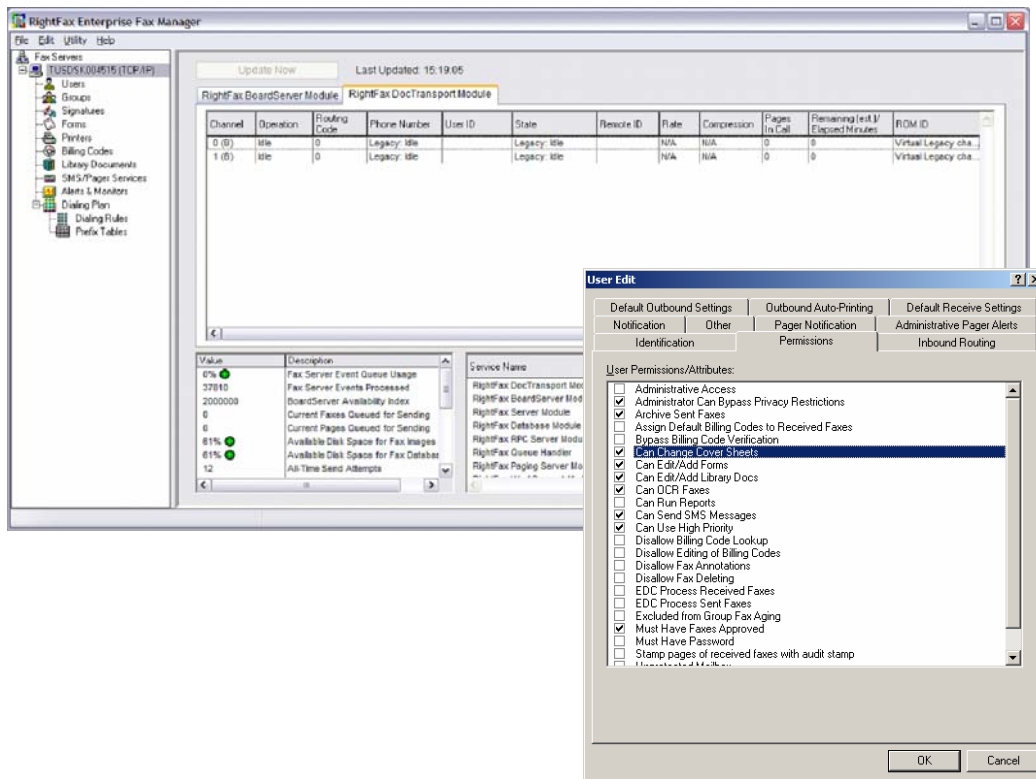
Using an Explorer-like interface, you can view statistics and channel information, and manage services for each individual RightFax Server with Enterprise Fax Manager.

Server Statistics

- Enterprise Fax Manager provides comprehensive server statistics including:
- Allows administrators to easily view server status of every server with a click of a button
- Allows administrators to determine server workload and to configure Least-cost Routing (LCR) routes
- Fax server event queue usage
- Fax server events processed
- BoardServer availability index
- Current number of outgoing documents queued to be sent
- Available disk space for fax images
- The total number of documents and pages sent from the server
- The total number of documents and pages received by the server
- Important channel information to give users a clear view of channel usage and allocation
- Fax channels available on the RightFax server
- Current operational status of each channel
- Inbound routing code for incoming faxes
- Destination User ID for incoming faxes

All RightFax server programs can be configured, stopped and started from within Enterprise Fax Manager either globally or individually. The bottom half of the Server Statistics screen lists each RightFax service, the length of time it has been running, and its startup method. Remote servers can be easily managed as well with proper network and RightFax administrative access.

Figure 2. Administrators can easily manage users, groups and other objects using EFM.



MANAGING USERS, GROUPS AND OTHER OBJECTS

- Allows administrators to easily manage users, groups, signatures, forms, printers, billing codes, library documents, and more, for all RightFax Servers from one application
- Provides a powerful multiserver management tool that can be used locally and remotely for centralized administration of all RightFax Servers on the network
- Allows administrators to start and stop fax servers, individually or globally
- Offers drag-and-drop control for copying users, groups, library documents, LCR rules, prefix tables and more

FOR MORE INFORMATION

Captaris Business Information Delivery solutions help organizations automate the information and document flow throughout the information lifecycle (capture, process, manage, deliver). With a comprehensive suite of software and services, Captaris helps organizations to grow revenues and increase profits while meeting compliance goals. Through a global distribution network of leading enterprise technology partners, Captaris has installed more than 90,000 systems in 95 countries in companies of all sizes, including the entire Fortune 100. For more information, visit www.Captaris.com or call 1.800.443.0806.

©2005 All rights reserved. No part of this publication may be reproduced, transmitted, transcribed, stored in a retrieval system, or translated into any language in any form by any means without the written permission of Captaris. The following are registered trademarks and trademarks of Captaris: Captaris, Alchemy, RightFax, Captaris Document Management, Captaris Interchange and Captaris Workflow. All other brand names and trademarks are the property of their respective owners. MC0010033 RE1205